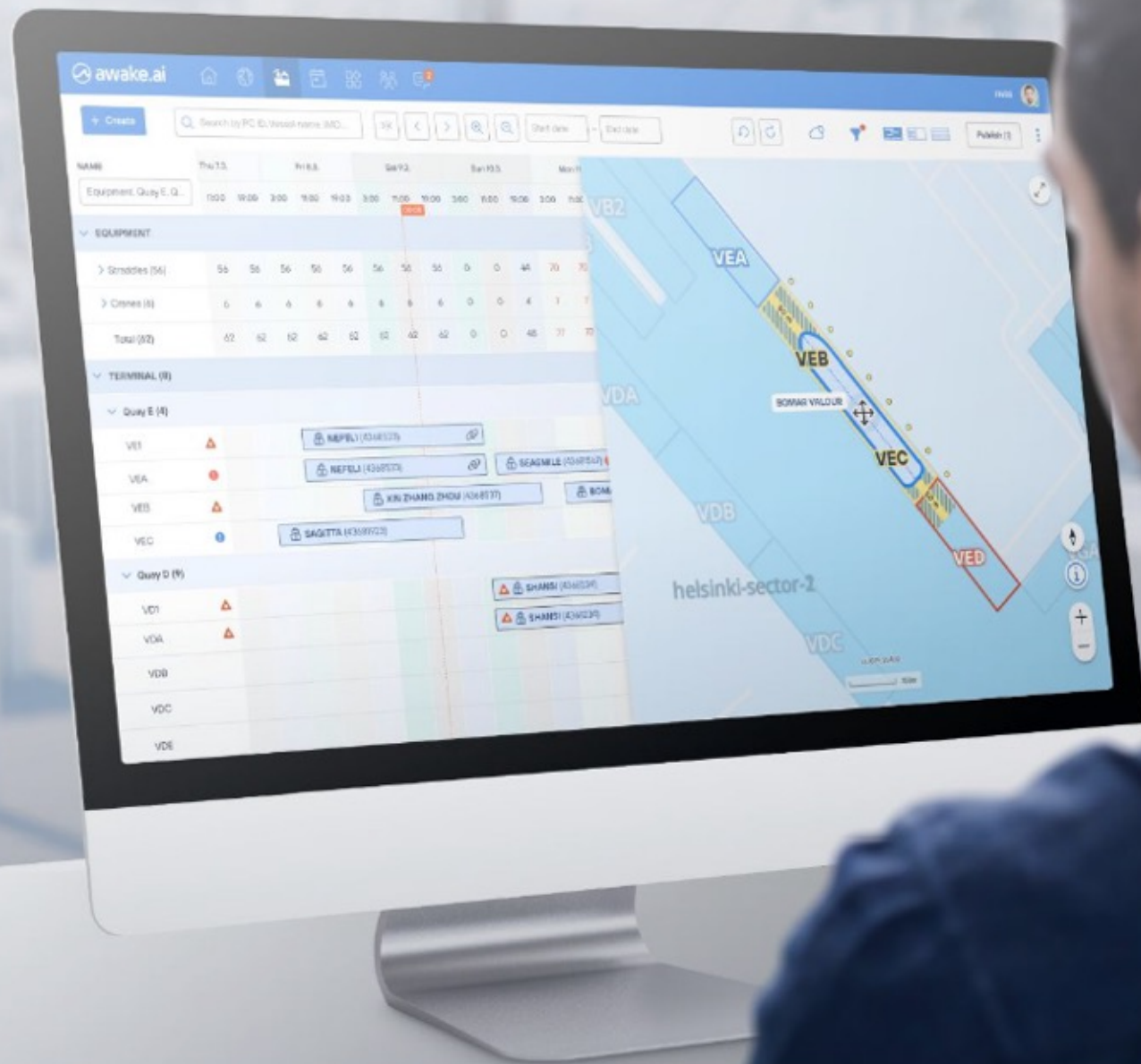




New Innovations in Logistics

CEO & Co-Founder
Karno Tenovuo
karno@awake.ai





CONFIDENTIAL



Ecosystem for Smart Ports & Shipping

Software Ecosystem



Multi-modal Transport Ecosystem (Caas)



One Sea Ecosystem (Autonomous Maritime)



Legislation & Regulatory Ecosystems



RESEARCH

PARTNERS



PRODUCERS
Products and Services

CUSTOMERS
Products and Services



Container 42 Ecosystem



Finance Ecosystem



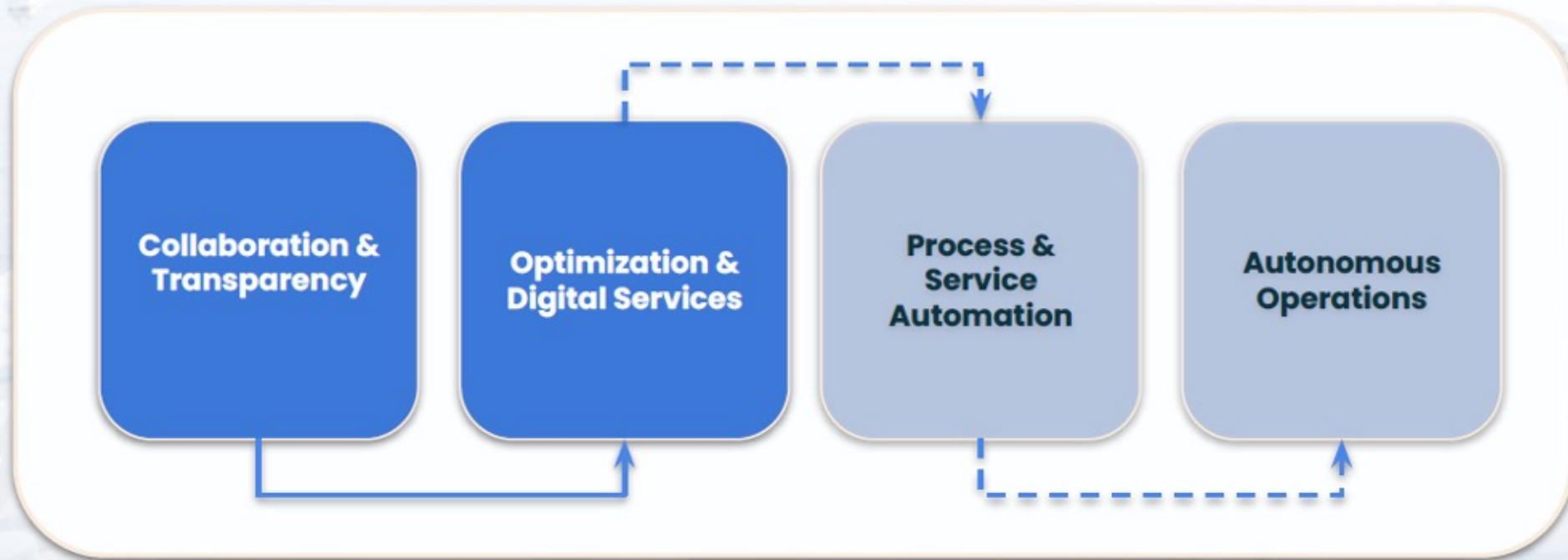
Connectivity Ecosystem



CONFIDENTIAL

awake.ai

Towards Sustainable & Intelligent Logistics



Smart Port as a Service



Smart Logistics Data Platform



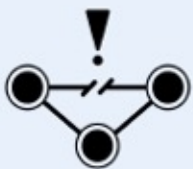
AWS BASED



**EASILY
SCALABLE**



**MONITORING/
LOGGING**



**FAULT
TOLERANT**



VERY SECURE



**CUSTOMER
SUPPORT**



**DISASTER
RECOVERY**



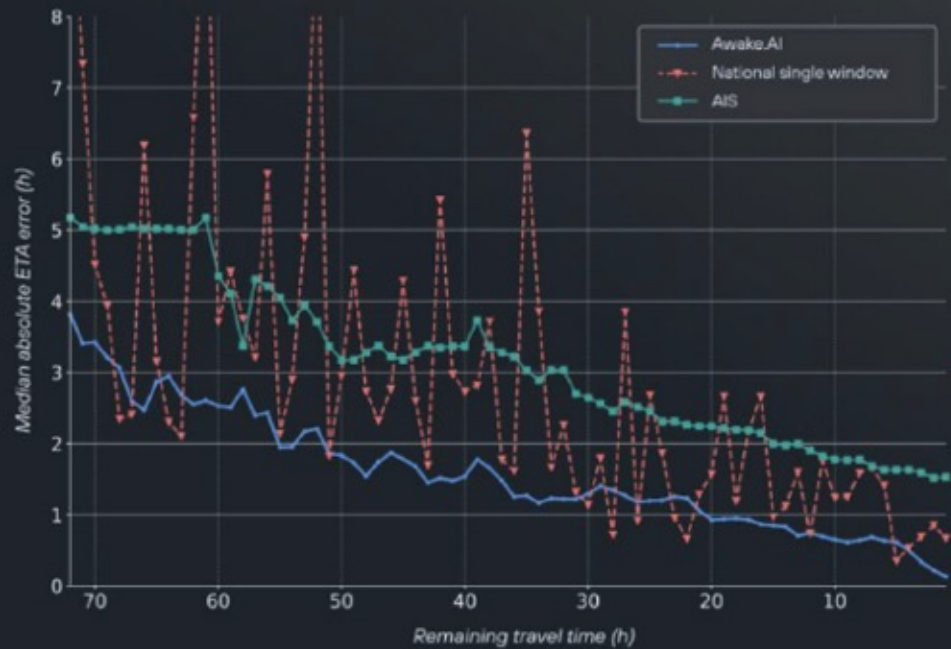
**HIGH
AVAILABILITY
24/7**

ETA Predictions & Ship Events

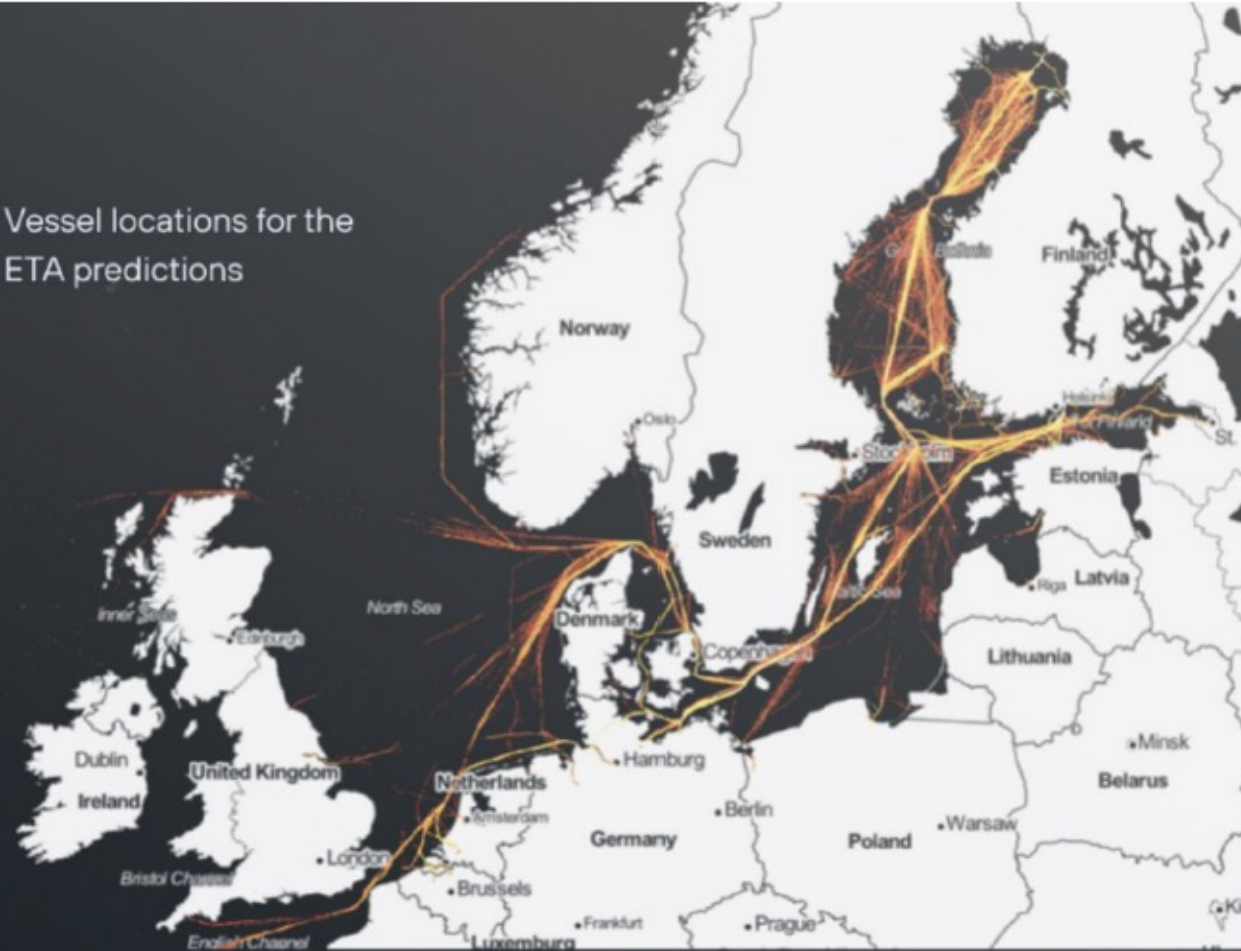


Comprehensive and accurate predictions API

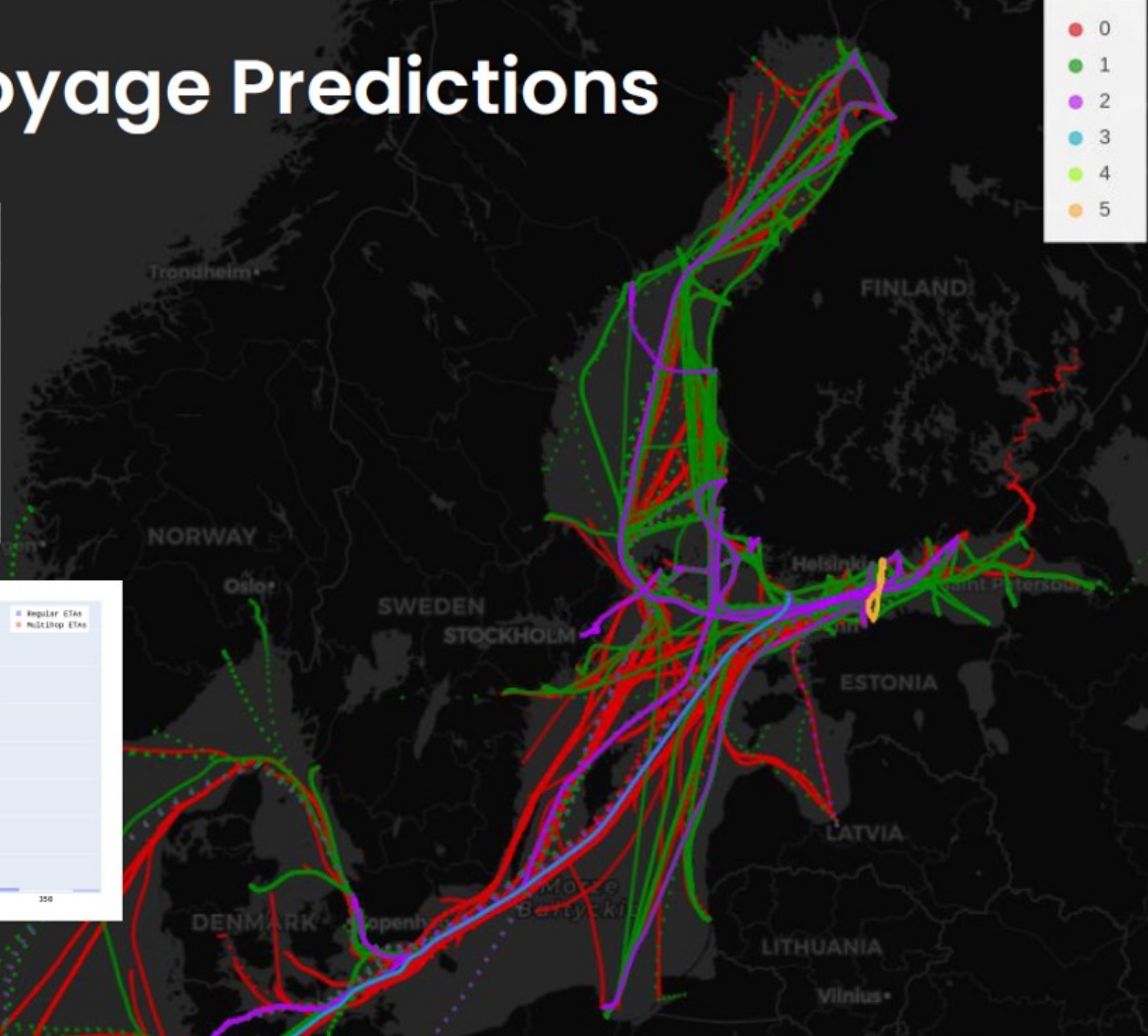
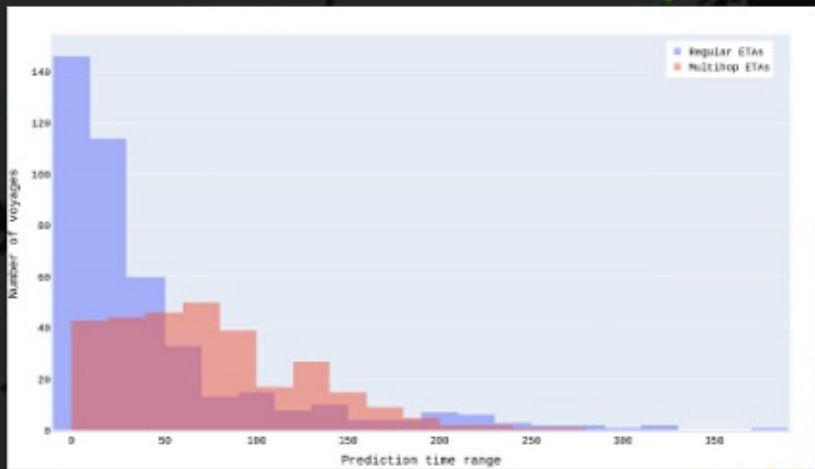
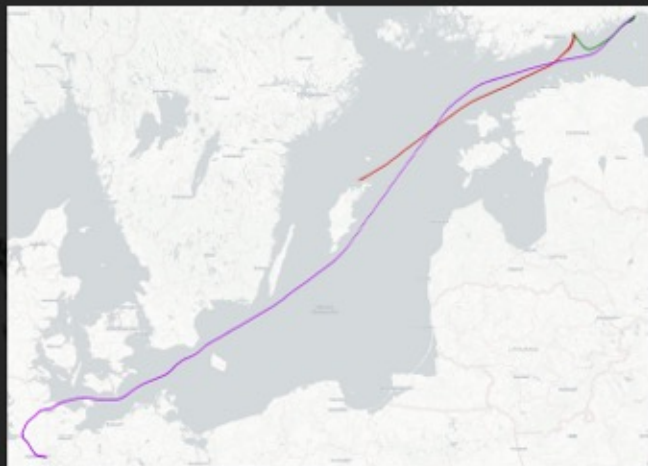
ETA statistics for 862 vessel voyages over the Baltic Sea during H1 2021



Vessel locations for the ETA predictions



Multihop Voyage Predictions



AI based Planning

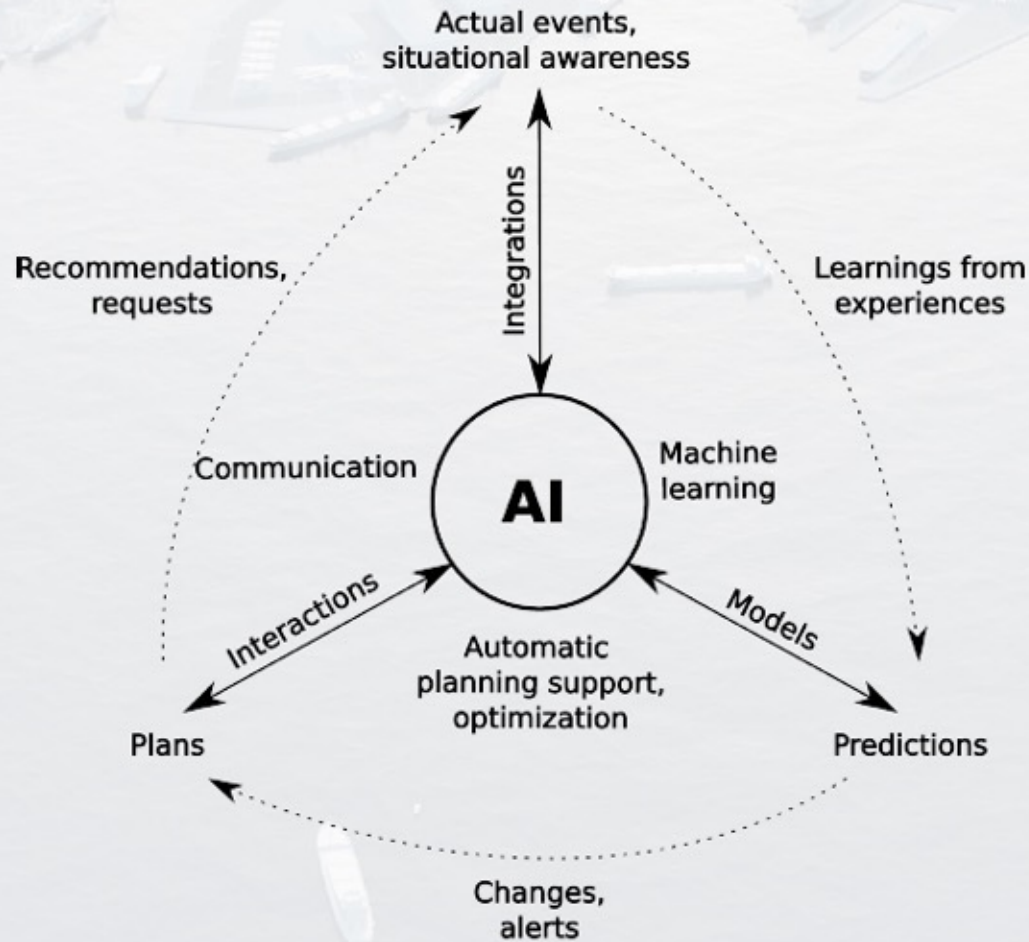
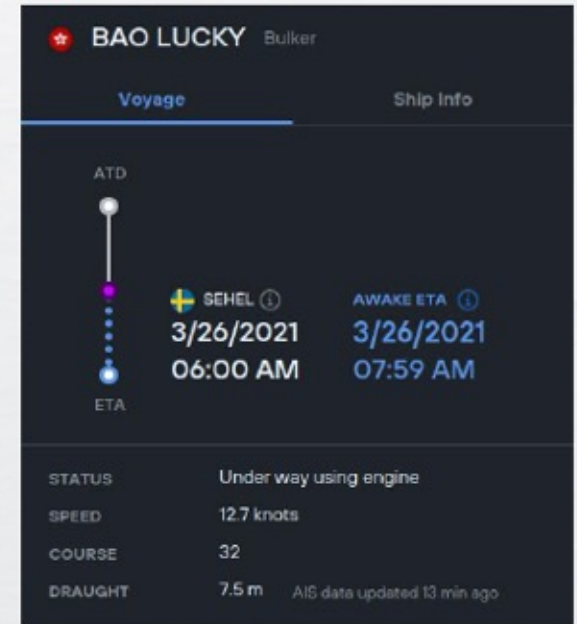
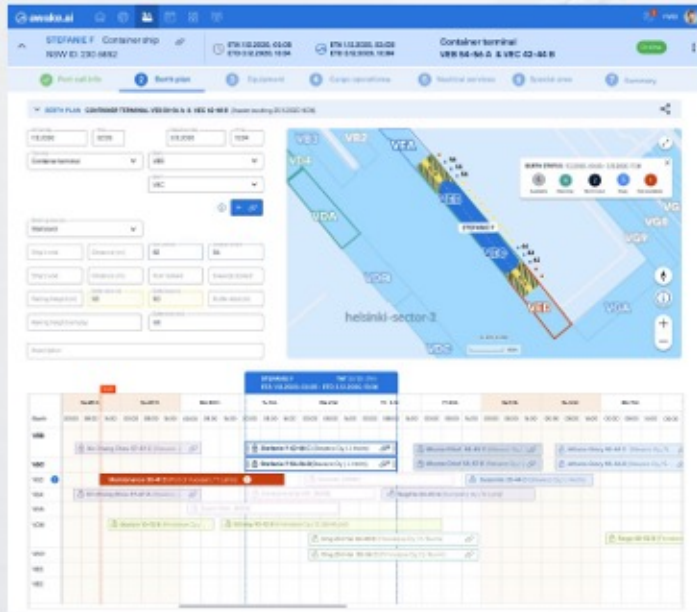
- Situational Awareness driven predictive berth planning
- Transparent and real-time plan sharing with port community
- Configurable resources and business rules for each port and terminal

The screenshot displays the 'Berth planner' interface on the awake.ai platform. It features a calendar view for the week of March 23rd to 29th, with a search bar for 'Port call ID'. A 'Weather' popup window shows forecasts for 'Tue 6.2 6:00' and subsequent days, including temperature, precipitation, and wind speed. The main interface includes sections for 'ANCHORAGE ZONE (1)', 'TERMINAL (8)', and 'Quay E (5)'. A map on the right shows the port layout with berths labeled VDA, VDB, VDC, VEB, VEC, and VED, along with resources like 'GANTRY CRANE 1', 'MANIFOLD 2', and 'BOMAR VALOUR'. Callouts highlight features: 'Weather forecasts', 'Precisely defined port area resources', 'Zoomable table view from 1 hour to 1 month', 'Accurate maps', and 'Powerful filtering'.

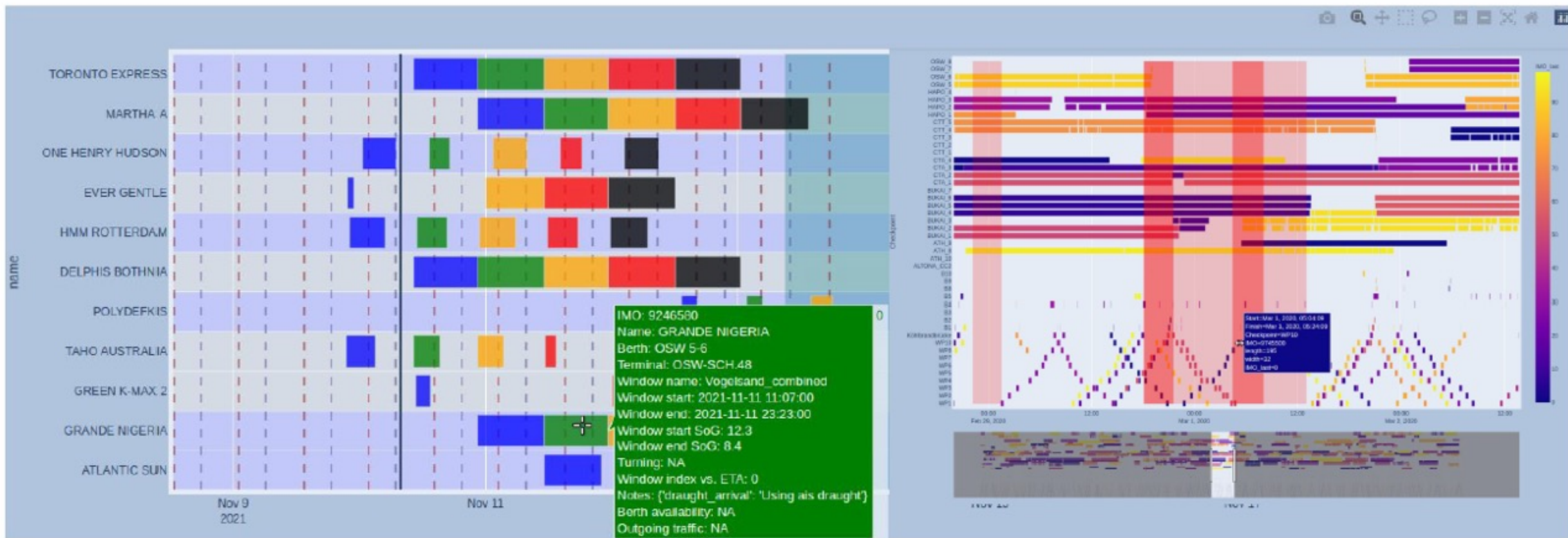
This section shows a detailed view of the berth planning interface. On the left, there are sections for 'TIMETABLE TERMINAL AND BERTH' with date and time selectors, 'SHIP POSITION AND BOLLARDS' with a ship icon and bollard settings, and 'DRAUGHT ON ARRIVAL' and 'DRAUGHT ON DEPARTURE' with input fields. A callout points to 'Precise ship positioning using table and on-top-of-a map'. On the right, a mobile application view for 'Bomar Valour (1234567)' shows a 'Plans' section with a timeline and a 'Ship info' section with arrival and departure times. A callout states: 'Mobile application for iOS and Android to view and confirm precise ETA to berth and ship berth positioning instructions'. At the bottom, a callout notes: 'Precise ship positioning with bollards, meters and buffers'.



Analytics Assisted Operations

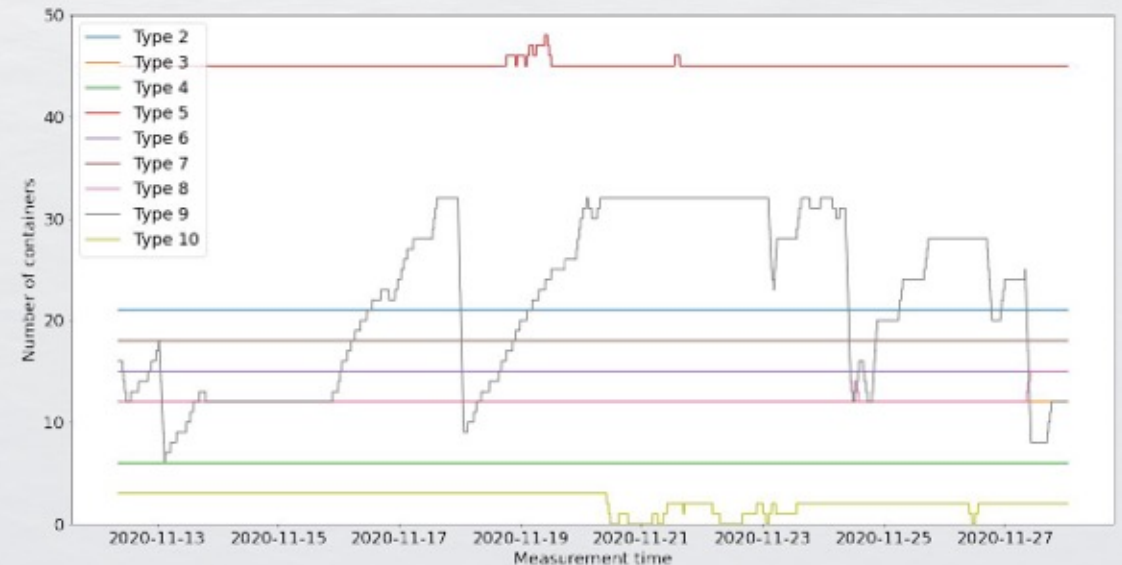
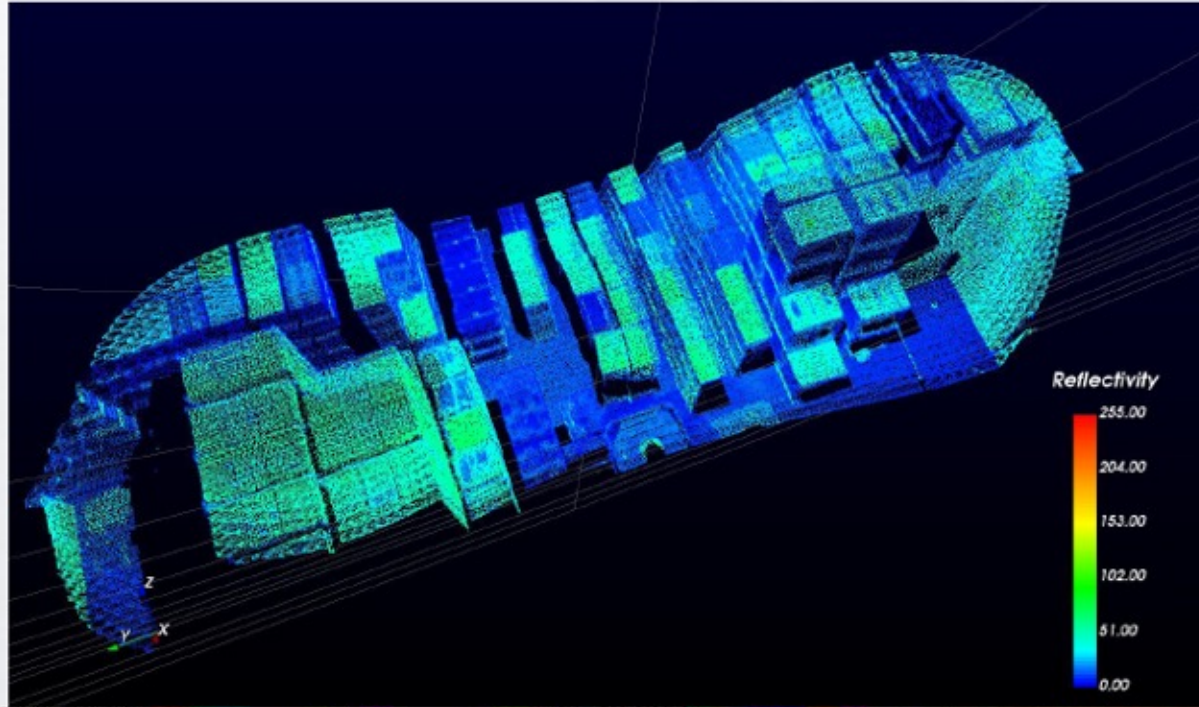


Automated Schedule Estimations (RTA, RTD)



CONFIDENTIAL

Port Yard Monitoring & Tracking



23 days since the latest near miss	109 days since the latest accident	2 ISPS code
523 People	346 Trucks	10 Ships

CONTAINER CRANE 1

Container area A1
37 TEU / 50 TEU

Container Crane 2 ✕
VEB, VEC
 Current status:
LOADING progress 58%
 Completed: 🕒 26.4.2021, 15:11

23 Current rate	146 Days since the last accident	 Boost activity (last 6 h)
--------------------	-------------------------------------	-------------------------------

Container Terminal A12

UNIT NUMBER: FLC-U-459185-0
UNIT TYPE: BC

ATA: 26.4.2021, 12:15
ETD: 26.4.2021, 18:15
UN NR: 1133

LOCATION: [Send location details](#)
CONTACT PERSON: John Lane
PHONE NUMBER: +358 50 123 4567
OPERATOR: International Logistics Ltd.

Status
WAITING FOR TRANSPORT

Exp
 In 0 d 03:04 h

AWK UPDATE: 2 min ago

[Get safety instructions](#)

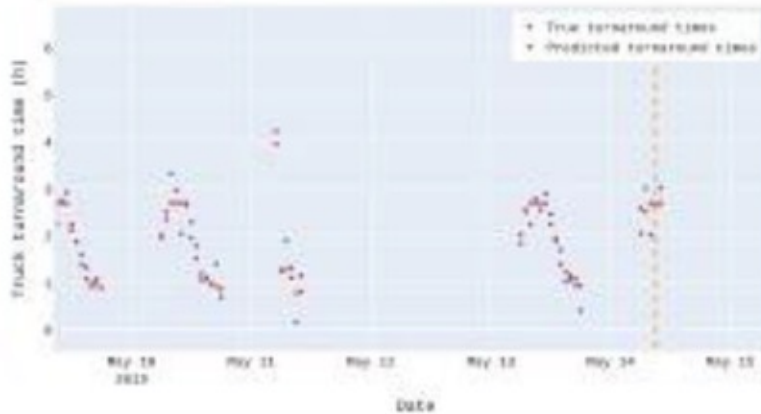
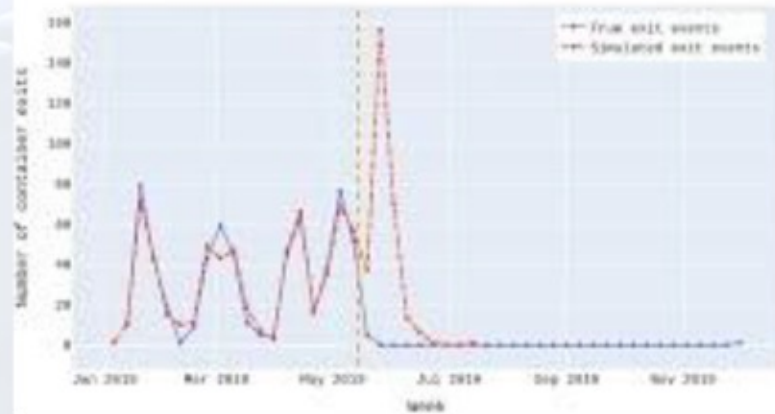
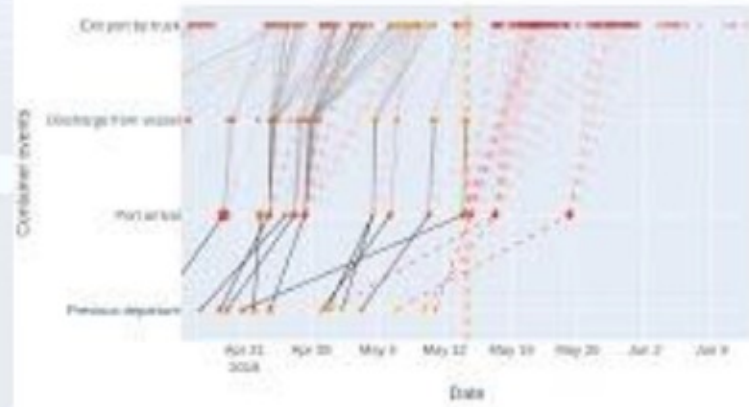


61.1079/21.4110

200m

-
-
-
-
-
-
-

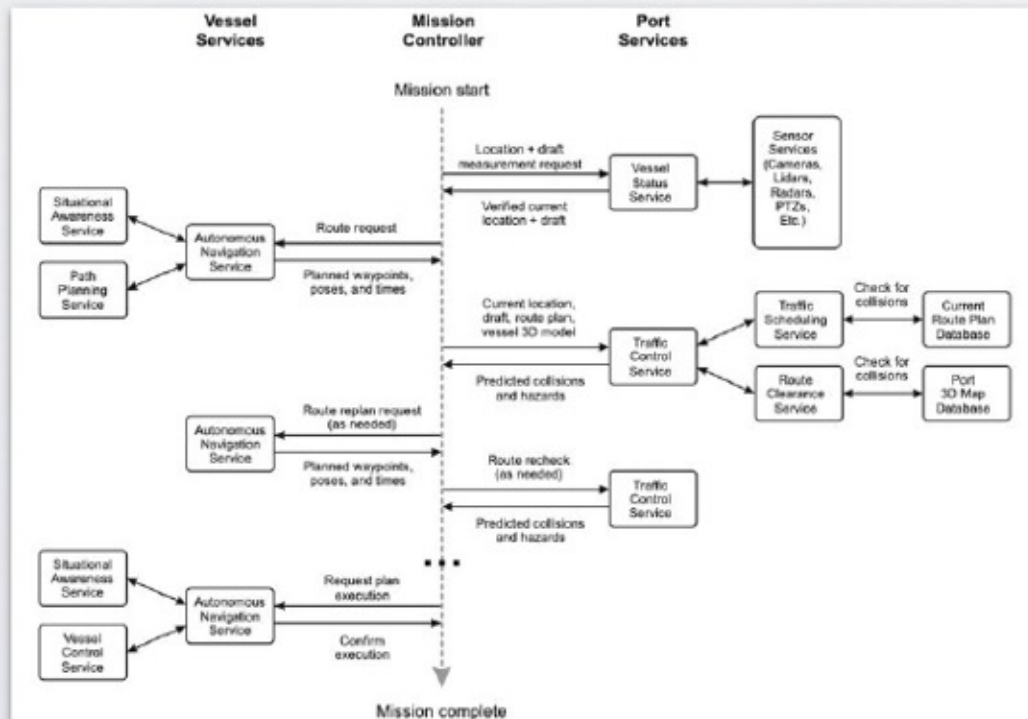
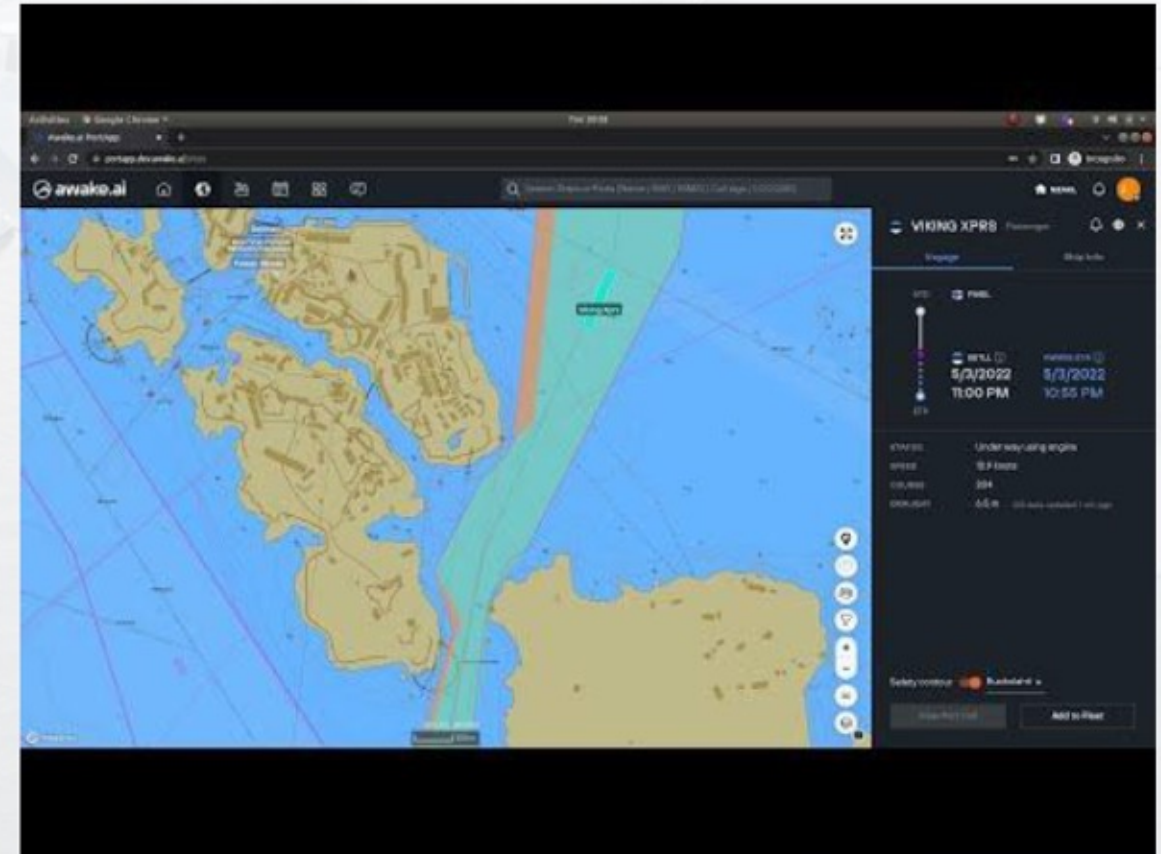
Predicting Multimodal Traffic



Digital Twin for Smart Shipping

Enabling Autonomous Operations

- Smart port call simulator
- Virtual ship in real world environment
- Simulation of API calls between the vessel and shore side systems
- Simulating safe navigation areas with current vessel status and weather conditions



Smart Marketplace

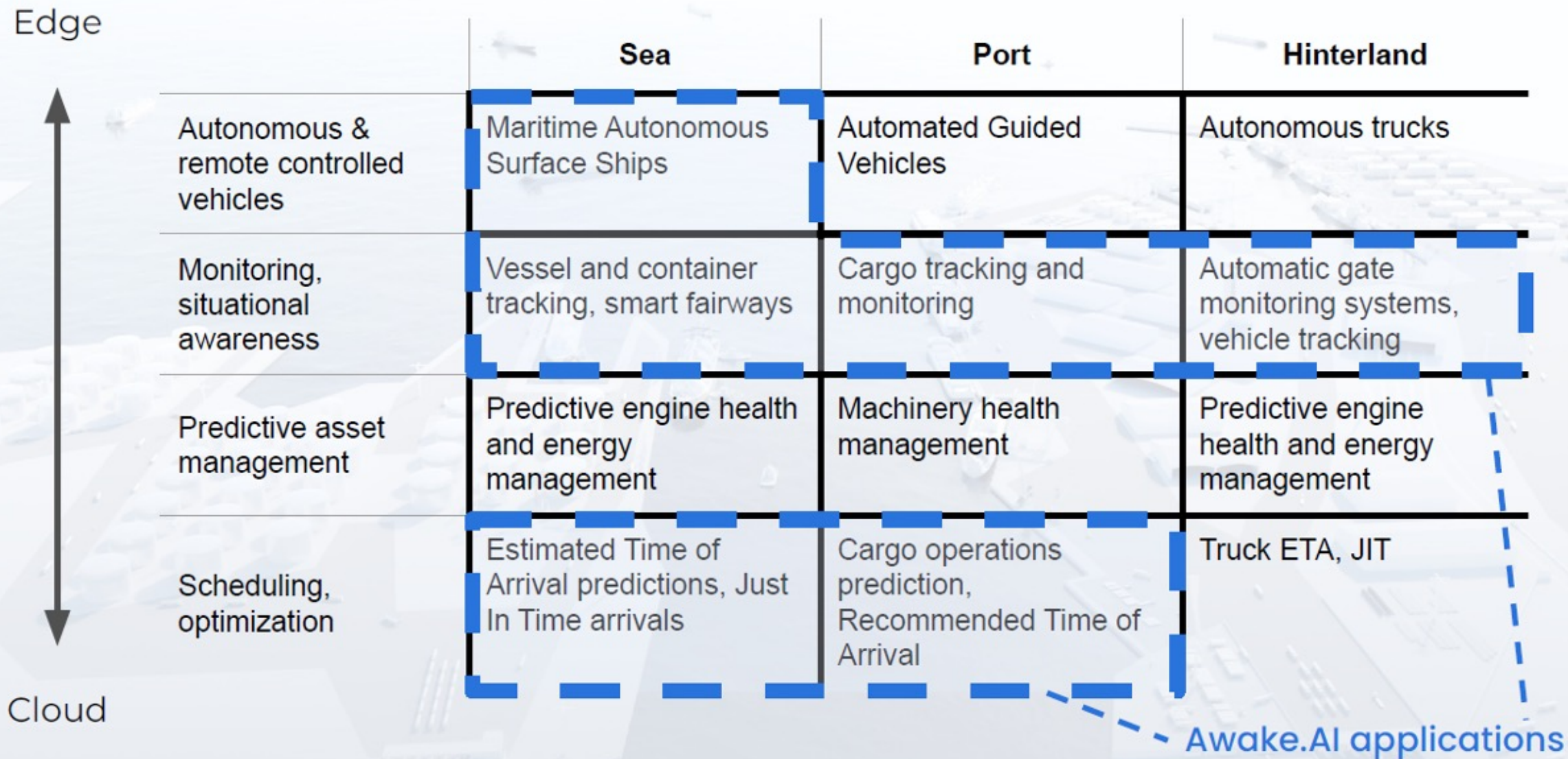


Welcome to Awake Marketplace



Automating buying & selling of port services

Application Areas of AI in Maritime Logistics





Leading the Transition to Sustainable & Intelligent Maritime Logistics

Karno Tenovuo
karno@awake.ai

+358 40 5799552

