



“Smart way in mobility in Tartu”

Jaanus Tamm

**TARK TARTU
SMART CITY**



TARK TARTU
SMART CITY



Smart city since 1632

- Second-largest city in Estonia
- Research and education centre
- University of Tartu was founded in 1632

- Almost **100 000** citizens
- 50% are **under 35** years
- About **18 000** students
- Around **15 000** companies
- **3%** of unemployment
- **90%** uses internet
- **98%** holds ID-card

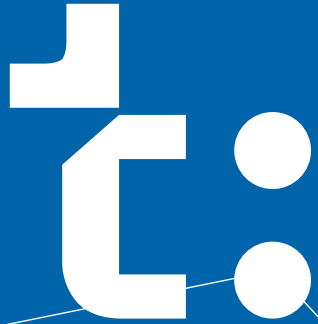




Restrictions vs. new opportunities
Private cars vs. public transport and cycling

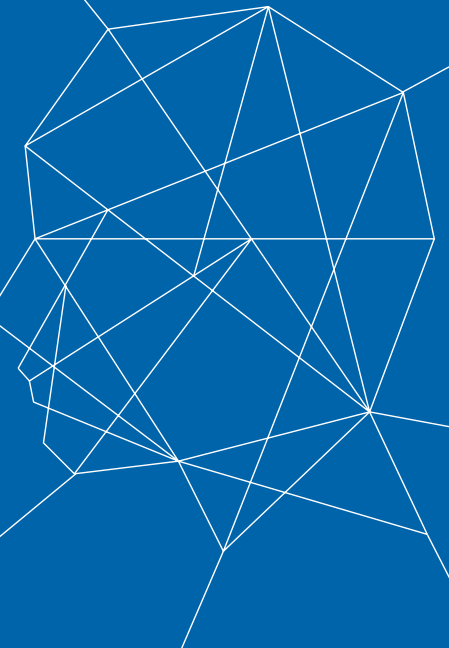


TARK TARTU
SMART CITY



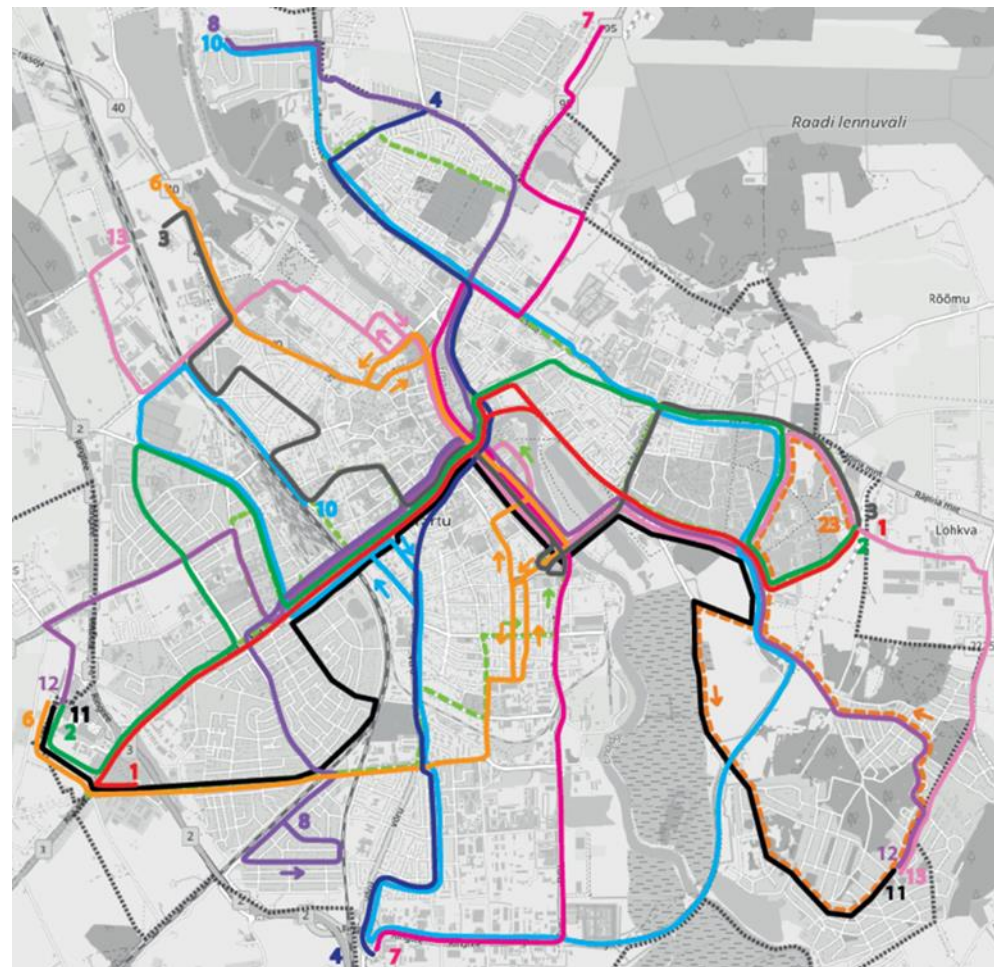
100% Carbon Neutral Public Transport System!

reputation



New buses and new bus line network – high quality service

New biogas buses



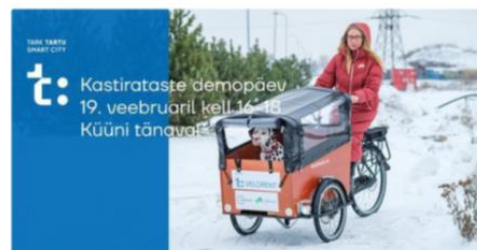
New busline network

Bikesharing – enhancing cycling

- 500 pedelec (electric) bicycles, 250 regular bicycles
- More than 100 stations
- Operated by Tartu Linnatransport (municipal public transport)



Bicycle library – small logistics



Ootame kõiki huvilisi 19. veebruaril kell 10-18 Kõni tänaval (H-kõiki) vahetus lähedusse uudistama ja kastirastega proovivõtta tegemist!

Demopäeval tutvustatakse kolme erinevat elektrilist kastirastet:

- 7 koka rattas on mõeldud ainult kaubaveoks;
- 7 koka rattast sobivad ka inimeste transpordiks.

Üritus on kõigile tasuta.

Rattad on pärit Hollandist, kus kastirastete kasutamisel on pikajärelised traditsioonid.

Tartu velorent on eelneva järgitaste laenuks, mis tutvustab ja pakub nii erastatule kui ka ettevõtjatele keskkonnamõistlikke liikumise- ja logistikalahendusi.

Tartu velorent haldab Tartu linnatranspordit.

Täpsemalt saad lugeda kodulehelt? www.tartuvelorent.ee

Velorent on kutsutud ellu projekti CycloUrban-raames Euroopa Kõigeprogrammi toel.

Event Venue & Nearby Stays

© Kõni, Tartu, 51003 Tartu Maakond, Eesti, Eestlane



- Start : January 2021
- Name : Velorent
- Bicycles : 3 cargo-bicycles + 17 (Nov 2021)
- Average lending period: 10-14 days
- Trips : 0,6 – 24 km
- Main users : families
- New booking system (Nov 2021)
- New maintenance and lending point (Nov 2021)
- Operated by the Linnatransport



New infrastructure



t: Data management and data based planning

TARK TARTU SMART CITY t:

HETKEL ON TARTU TEMPERATUUR 10 KRAADI NING LINNAS LIIGUB 45 BUSSI.

HOONED LIIKUVUS VALGUSTID ILM INIMESED MINU ANDMED



t: UNIVERSITY OF TARTU Institute of Computer Science Interreg Baltic Sea Region EUROPEAN REGIONAL DEVELOPMENT FUND EUROPEAN UNION SU@BA

Home 23/03/2023

District analysis

Matrices

ECO MODALITIES LAST 7D 41.88%

ACTIVE MOBILITY LAST 7D 26.30%

PUBLIC TRANSPORT LAST 7D 15.58%

49097 VEHICLES ENTERED 48836 VEHICLES EXITED

Modality Type: All

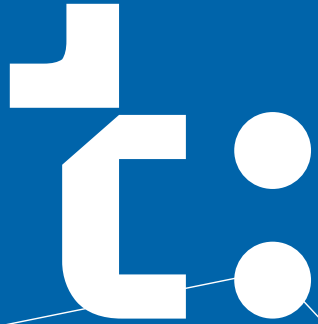
Show selected district as: Origin Destination

Showing All trips where Keslinna is the origin. Arrows' thickness and color represents number of trips.

Daily Modal Split

Bike 24.17% Vehicle 1.32% Bus Pedestrian

TARK TARTU
SMART CITY



Thank you for your
attention!

Jaanus Tamm

Project manager, Tartu City Government

Jaanus.Tamm@tartu.ee