

ICEYE

Paving the Way from Space

New business opportunities with Earth Observation

Kaj Pyyhtiä
Director, Strategy
ITS Kasvufoorumi 2025







ICEYE




16 MARCH₅

ICEYE

13 MARCH
11

Helsinki, Finland
Pörssitalo



An aerial photograph of a city grid, likely New York City, showing a dense pattern of streets and buildings. The image is split vertically: the left half is dark and grainy, while the right half is bright and washed out, representing the effect of volcanic ash. The text is overlaid on the dark left side.

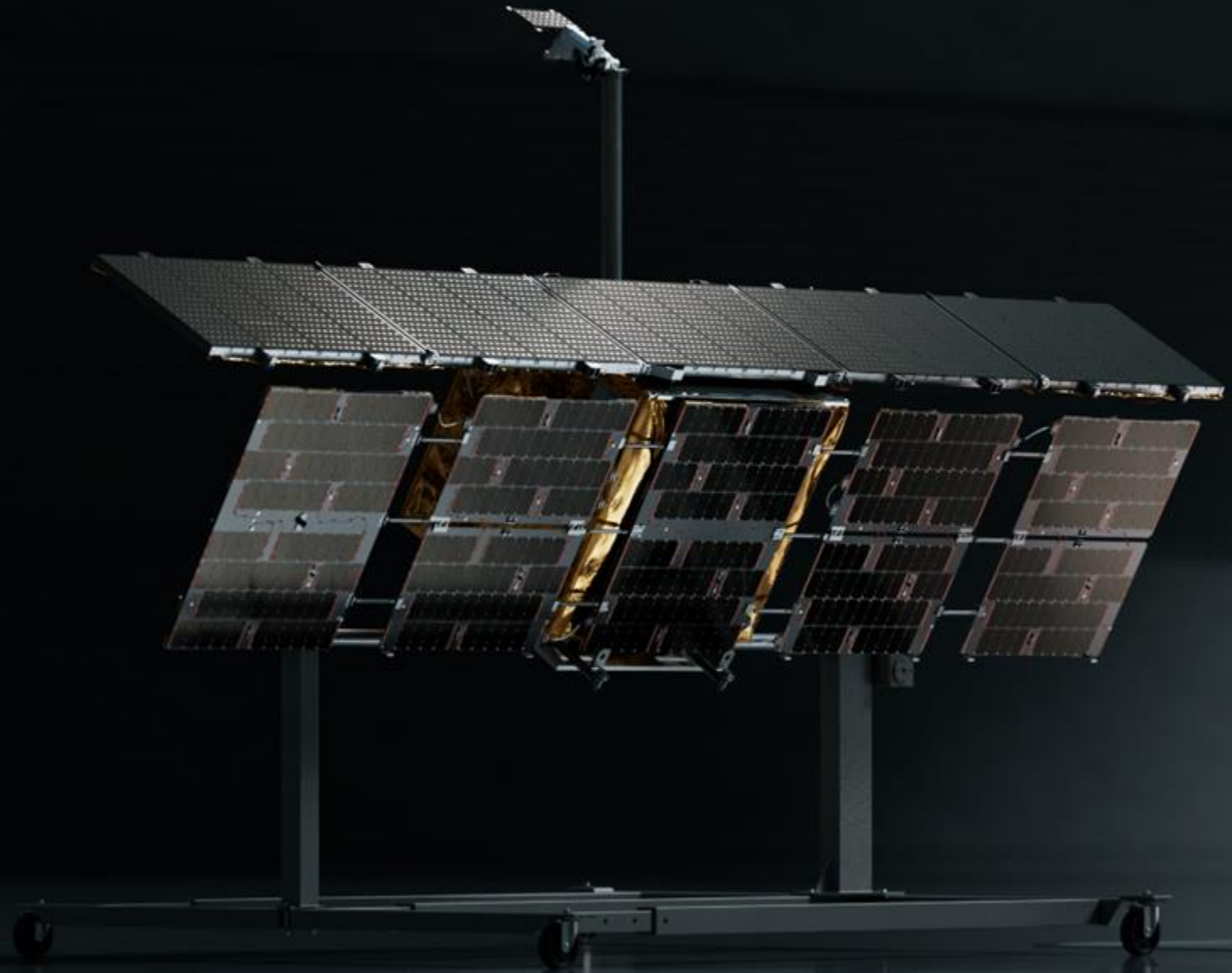
Through clouds
Through darkness
Through smoke
Through volcanic ash

The World's Largest SAR Satellite Constellation



44 satellites launched
January 2025

18 months from order to launch



ICEYE by Numbers

\$500+ M

Secured financing since 2015

700+

Global people with 70+ nationalities.

50+

Unique government and enterprise users

44

Satellites launched since 2018

11

ICEYE offices around the world

\$100M

Revenue 2023 (+90% YoY)*

Business Lines

MISSIONS

DATA

SOLUTIONS

Actionable data for defense and intelligence use cases



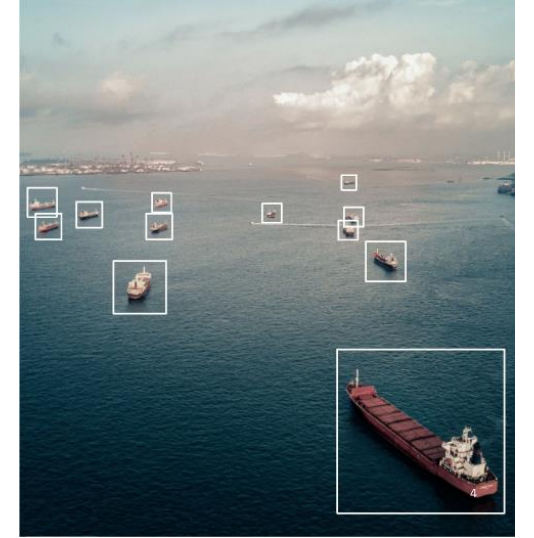
Know what is happening
at your borders and
beyond



Watch strategic sites and
detect changes



Monitor ports worldwide

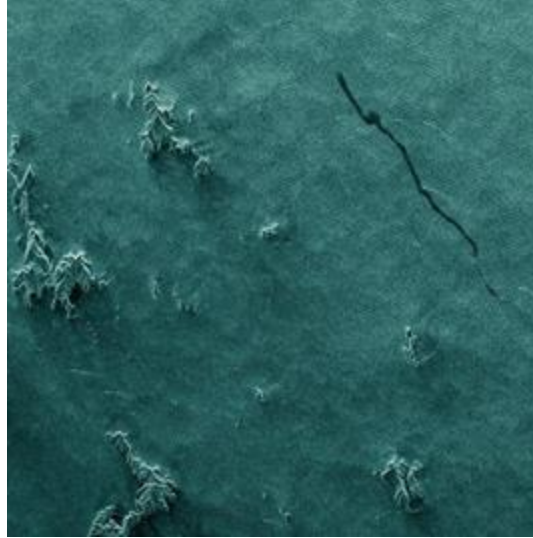


Detect suspicious
maritime activity

Actionable data for industry use cases



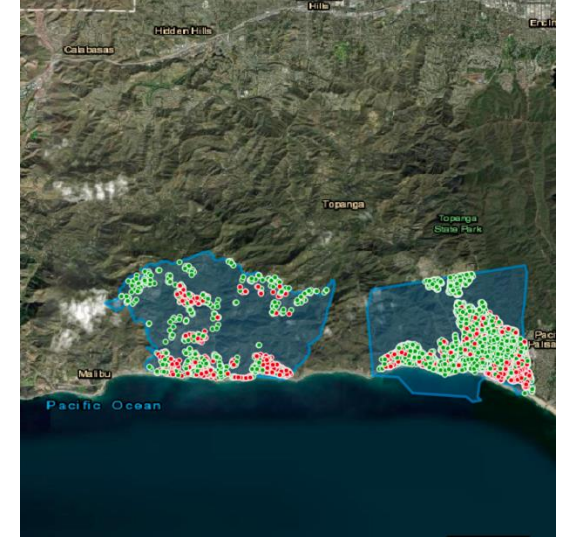
Monitor sea ice
in offshore operations



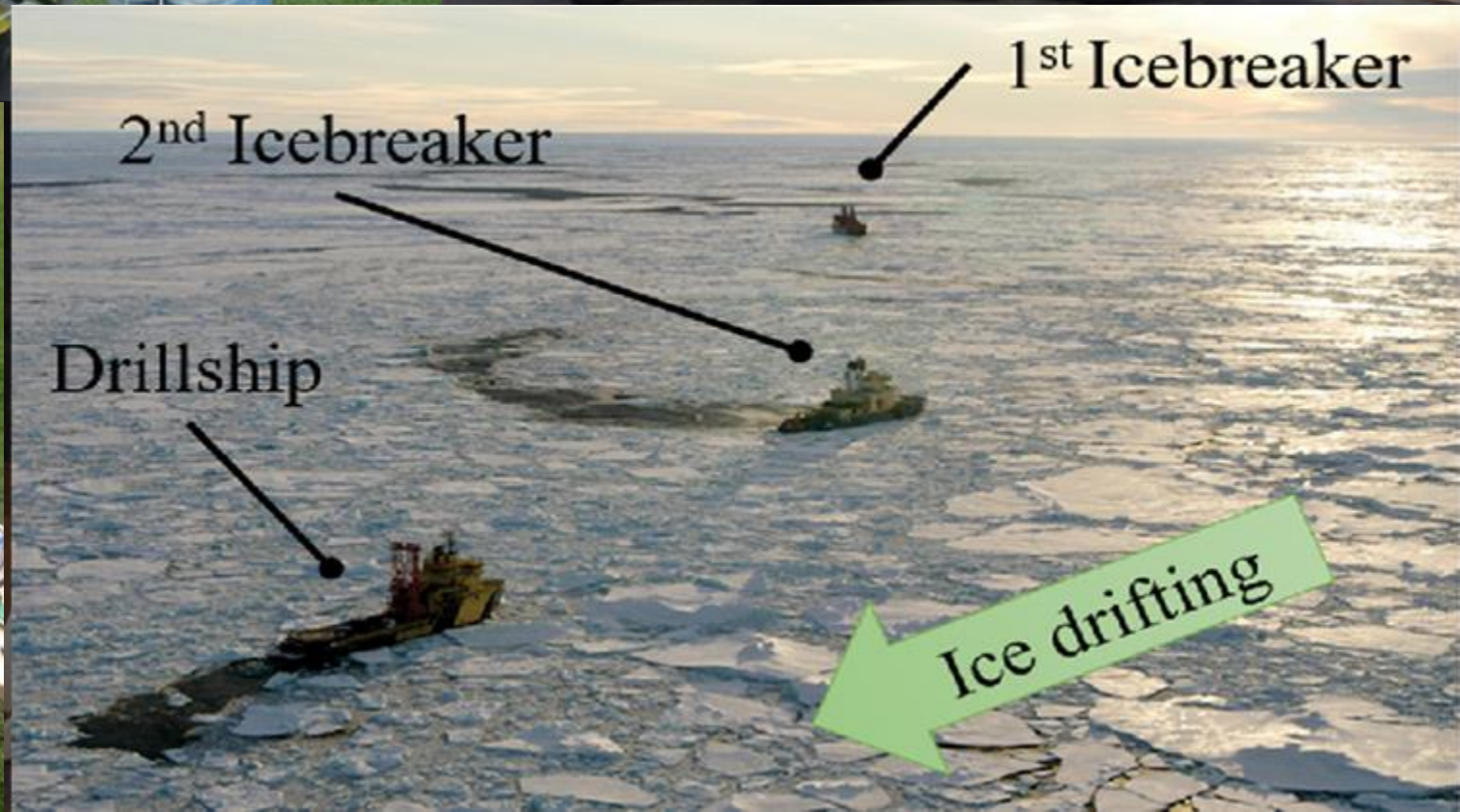
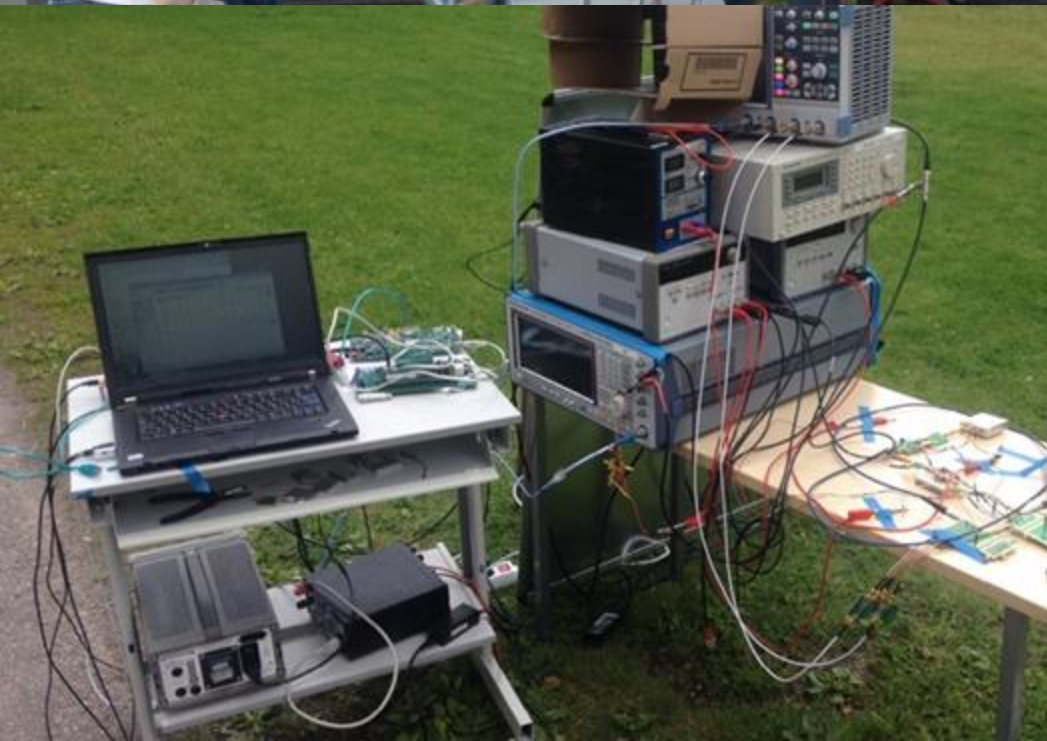
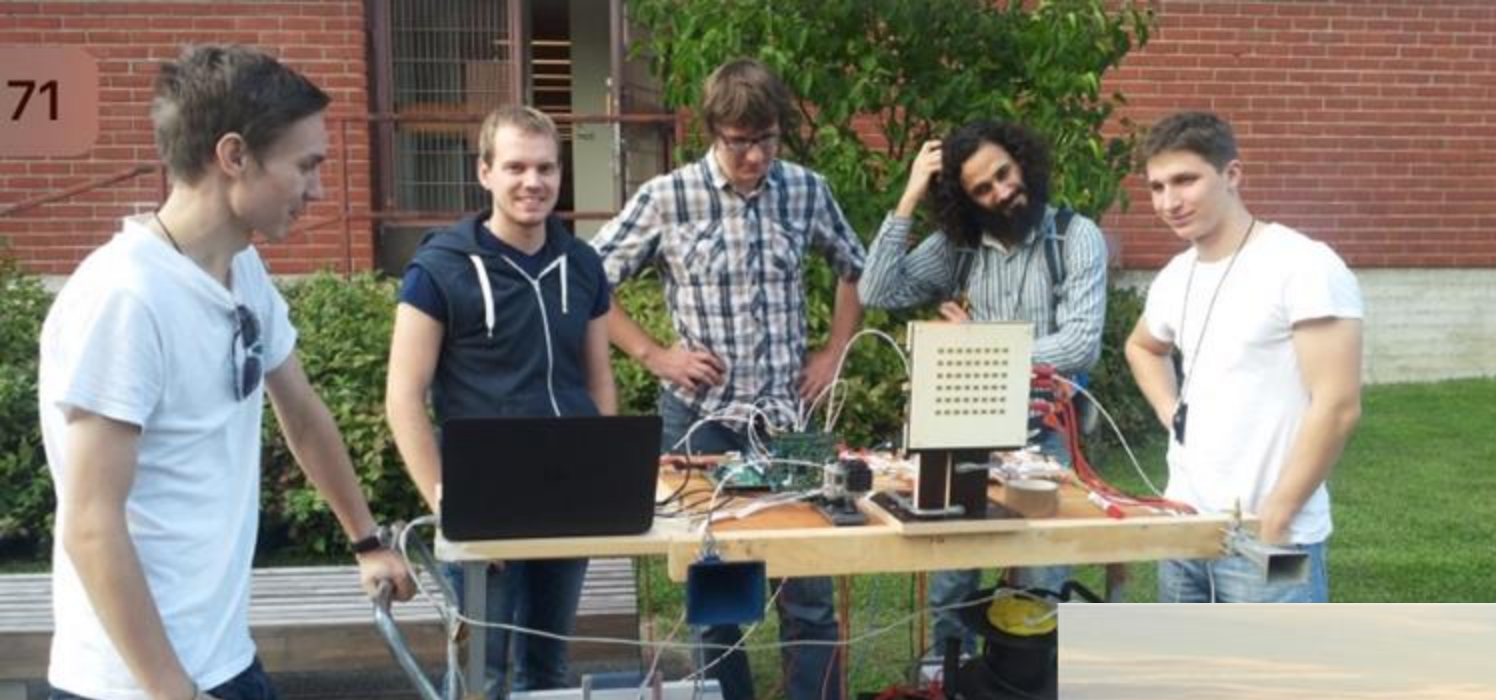
Detect and respond to
marine oil spills & oil seeps

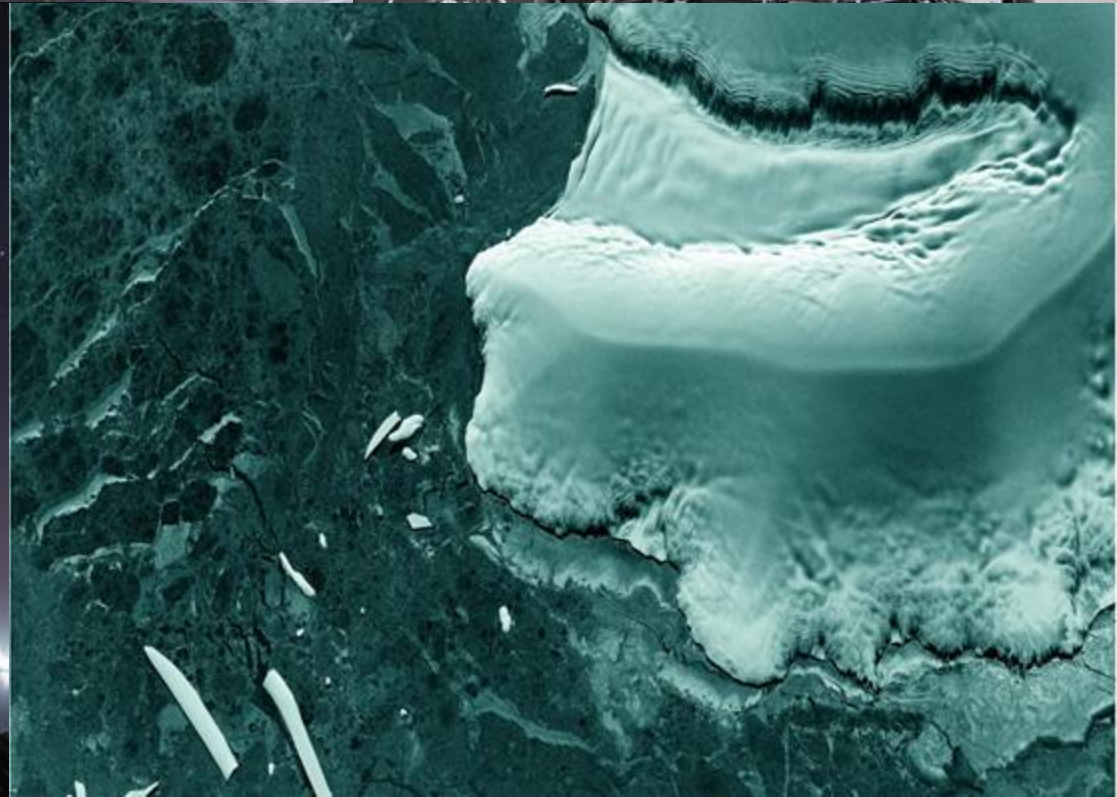
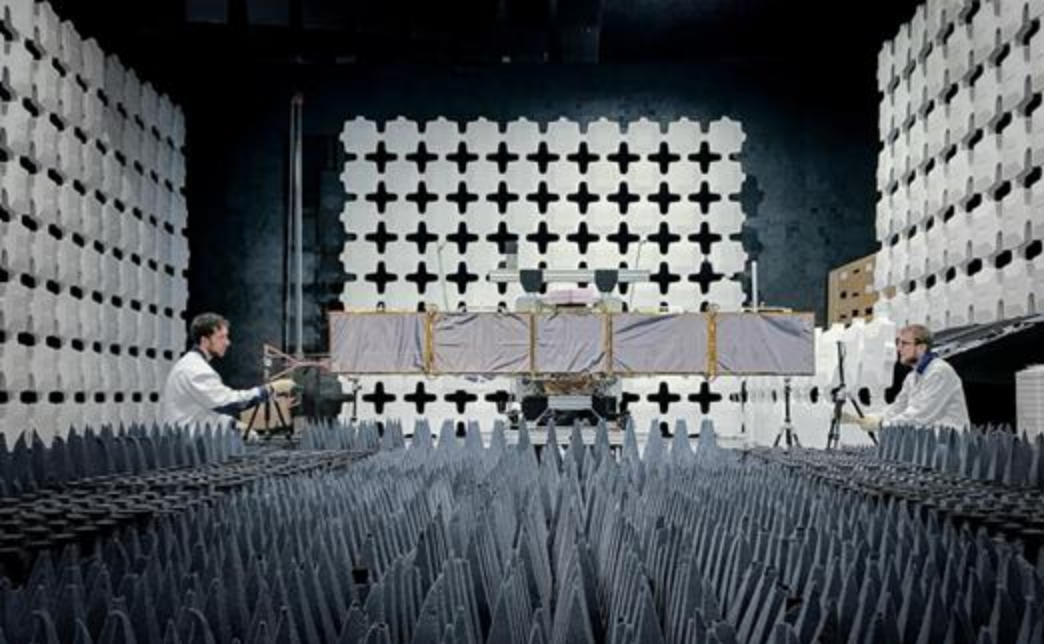


Monitor forests and
identify activities

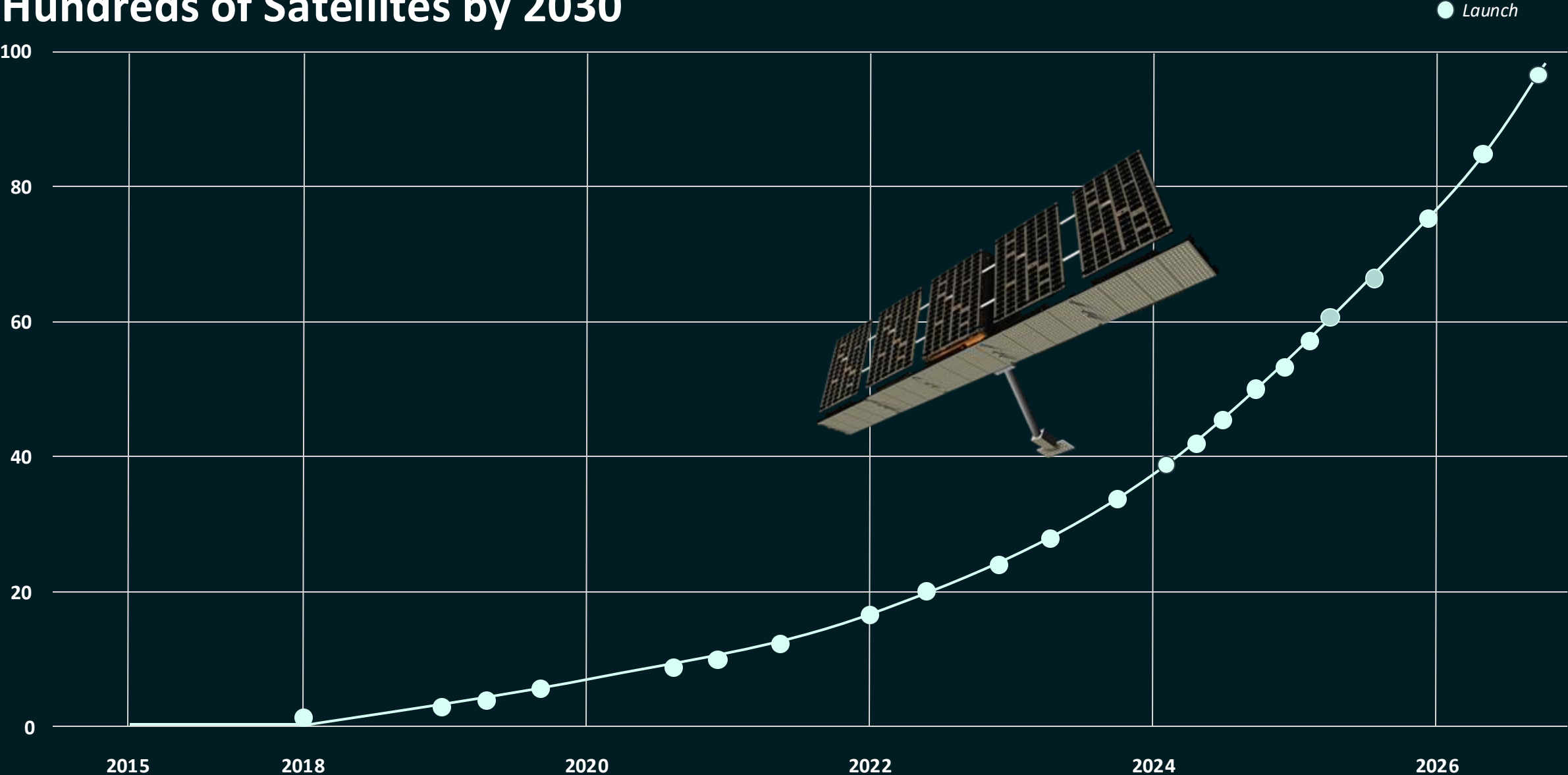


Monitor Wildfires and
evaluate damages





Hundreds of Satellites by 2030



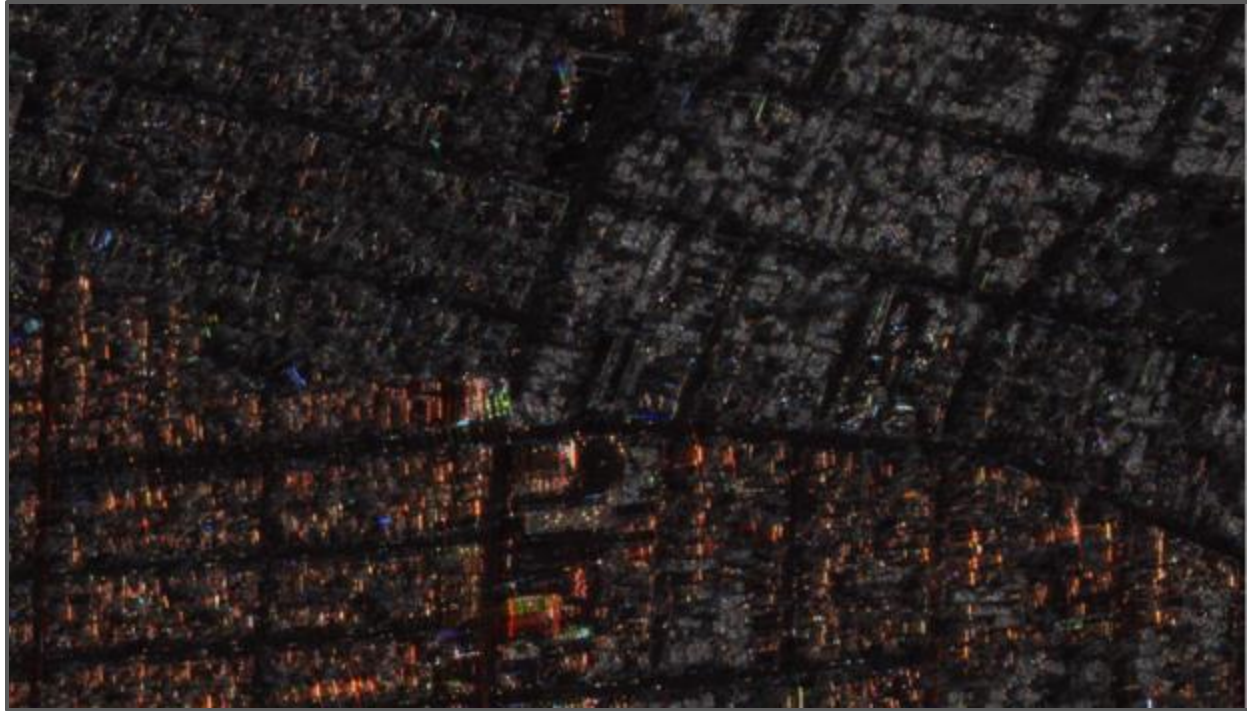


ICEYE Wildfire Solutions

LA FIRES

California | January 2025

SAR imagery over Eaton fire

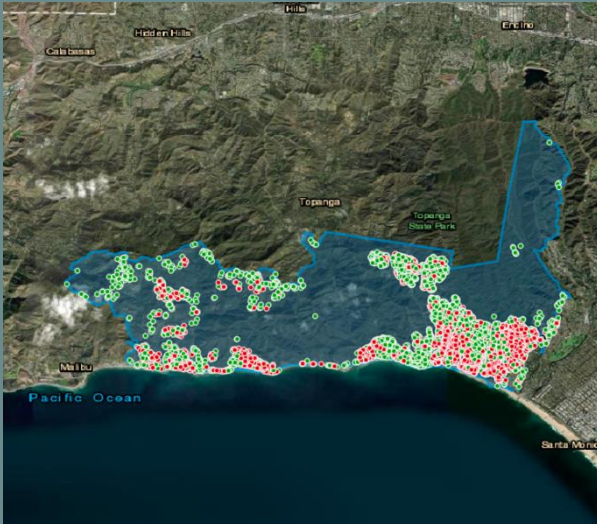


ICEYE SAR imagery



Google maps basemap

PALISADES - Event overview



The Palisades Fire is a wildfire burning in the Santa Monica Mountains of Los Angeles County in Southern California which has killed at least 8 people. As of January 12, 2025, at 11:13 a.m. PST, the fire had spread to 23,713 acres (9,596 ha; 95.96 km²; 37.052 sq mi), destroying the Pacific Palisades neighborhood of Los Angeles and nearby Malibu. It is the first and largest of a series of wildfires in and around the city of Los Angeles being driven by an extreme Santa Ana wind event.



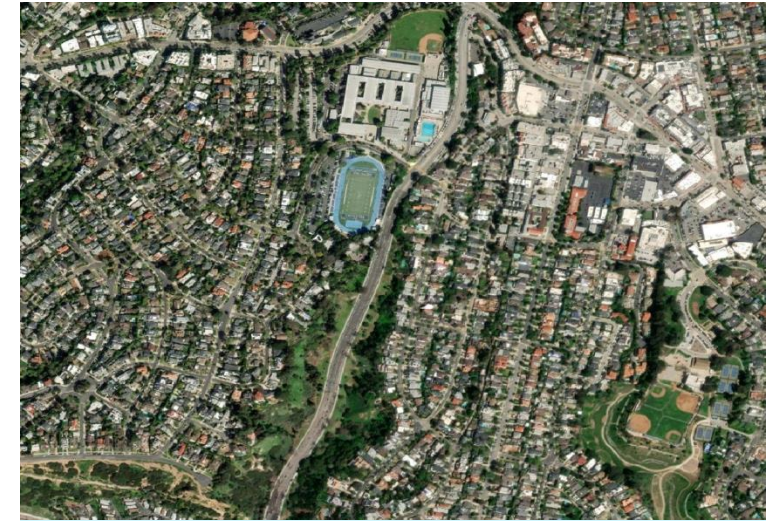
~ 23
SAR images



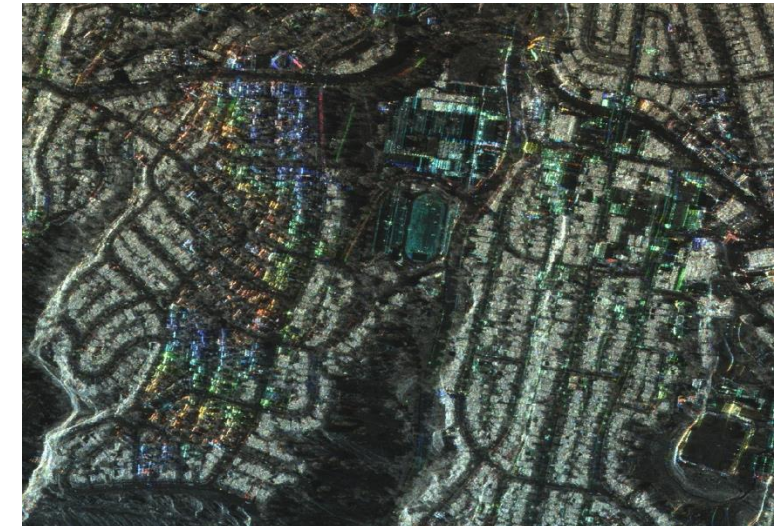
> 23,700
total acres



4,653/8,360
buildings



Google maps basemap



ICEYE SAR imagery

Building the next level of global digital infrastructure

AWS = Compute / Serve

GPS = Locate / Track

Google = Index / Search

ICEYE = **Observe / Verify**
The Truth

**An opportunity valued in the tens of billions.
How will you use it?**



Thank You!

Kaj Pyyhtiä
Director, Strategy
kaj.pyyhtia@iceye.com